

N.E.1/4 OF N.E 1/4 OF  
SECTION 4, T.6N., R.1W., S.L.B. & M.

TAXING UNIT: 03,10

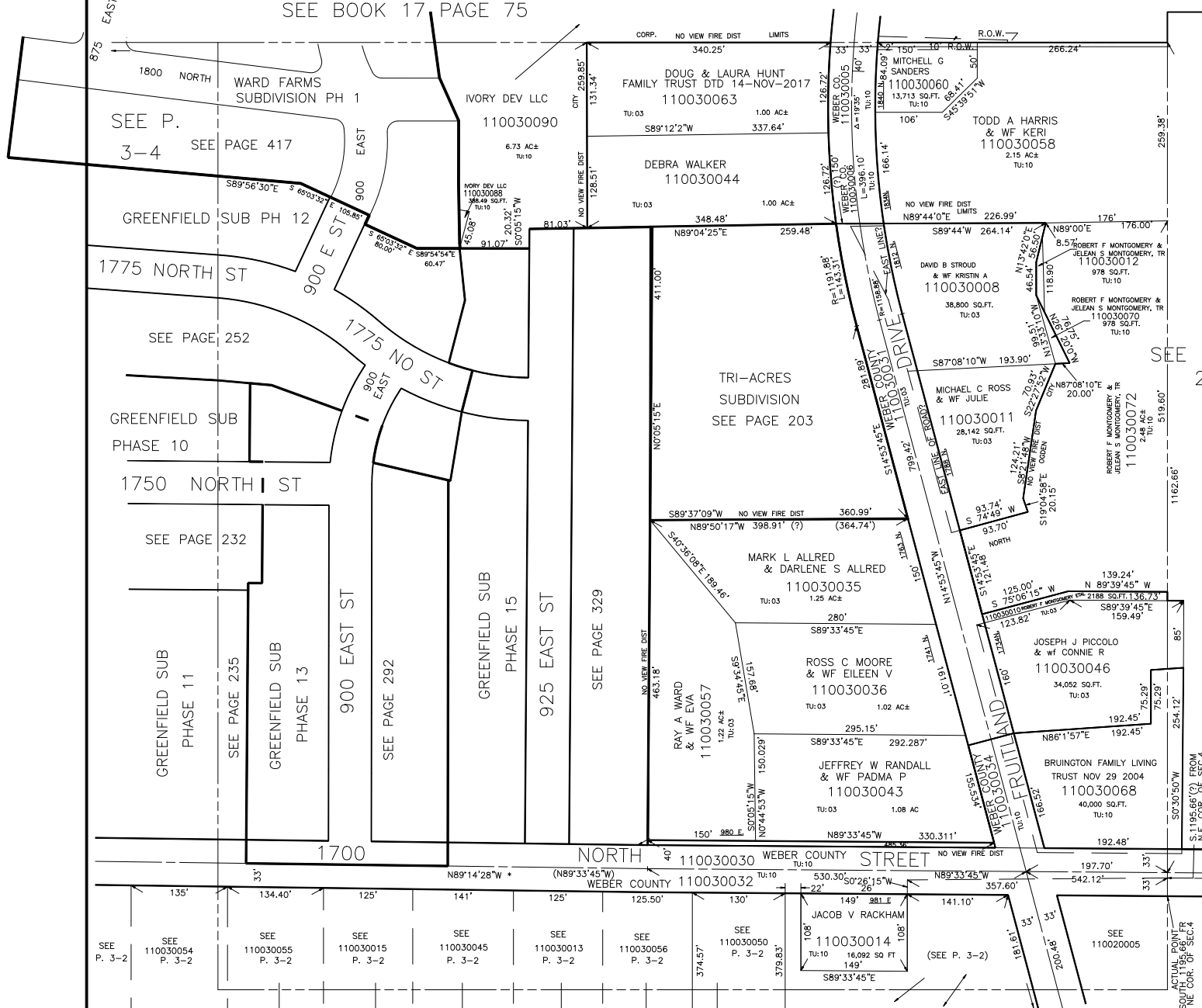
IN NORTH OGDEN CITY & WEBER COUNTY

PREFIX: 11-003

ALSO SEE PAGES 3-2,3,4

SCALE 1" = 100'

SEE BOOK 17 PAGE 75



SEE P. 3-2

SEE 110030054 P. 3-2

SEE 110030055 P. 3-2

SEE 110030015 P. 3-2

SEE 110030045 P. 3-2

SEE 110030013 P. 3-2

SEE 110030056 P. 3-2

SEE 110030050 P. 3-2

SEE 110030014 P. 3-2

(SEE P. 3-2)

SEE 110020005

NOTE : DATA FOR MOUNTAIN ROAD & FRUITLAND DRIVE  
TAKEN FROM COUNTY SURVEYOR'S MAPS. MAR. 1963

SEE P. 3-2

\* 1700 N. ST. ALIGNMENT  
40-12 27-JUN-95